

# Cable and Seeley Trail Map



## Trail Legend

### Singletrack

	Ojibwe Trail	10.5 Mi		Difficult
	Telemark Traverse	1.5 Mi		Difficult
	Esker Trail	3.5 Mi		Difficult
	Danky Dank Trail	4.5 Mi		Difficult
	FlowMama Trail	5.5 Mi		Intermediate
	Seeley Pass Trail	8.1 Mi		Intermediate
	Makwa Trail	12.6 Mi		Intermediate
	Dirt Candy	3 Mi		Intermediate, Difficult

### Other Designated Bike Routes

	Sleigh Trail	3.7 Mi		Easy
	Short & Fat	15.1 Mi		Intermediate
	Fire Tower	4.4 Mi		Intermediate
	Winding Pine	3.2 Mi		Intermediate
	Wild River	4.0 Mi		Easy
	Lake Helane Trail	5.1 Mi		Easy
	Phipps Firelane	7.7 Mi		Easy

### Other Trails

	Birkie Trail		Ski Trails - Other
	Birkie Classic Trail		Ski/Snowmobile/ATV Trails

### Roads

	Highway		Gravel Road
	Paved Road		Unmaintained Two-track

Hatchery Creek Trailhead

Landmark

Landmark with You Are Here Map

One-way Travel Only

Two-way Travel

Groomed Fat Bike Trail Access

Cabin

Yurt

Camping Developed

Camping Primitive

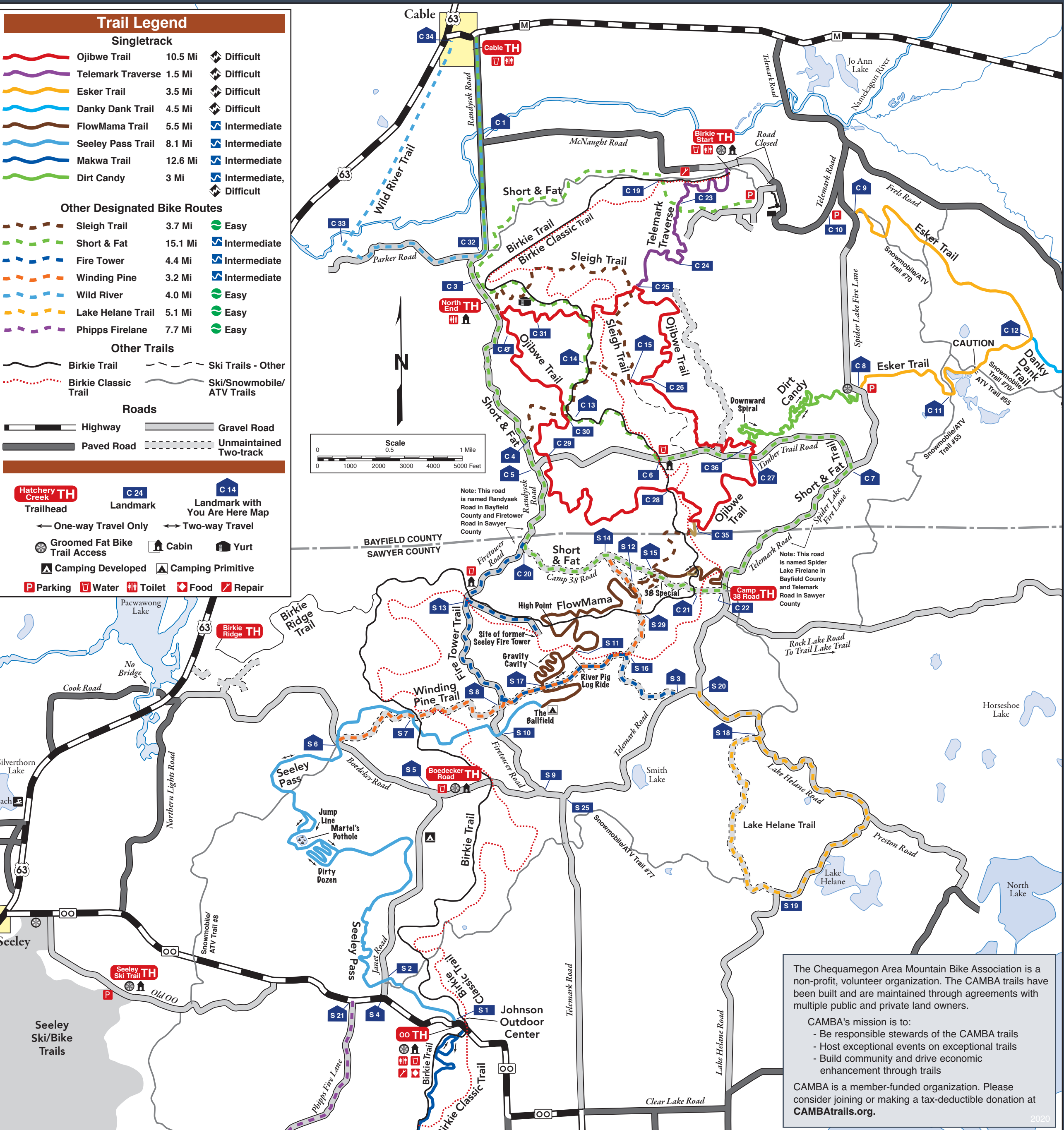
Parking

Water

Toilet

Food

Repair



The Chequamegon Area Mountain Bike Association is a non-profit, volunteer organization. The CAMBA trails have been built and are maintained through agreements with multiple public and private land owners.

CAMBA's mission is to:

- Be responsible stewards of the CAMBA trails
- Host exceptional events on exceptional trails
- Build community and drive economic enhancement through trails

CAMBA is a member-funded organization. Please consider joining or making a tax-deductible donation at [CAMBAtrails.org](http://CAMBAtrails.org).